

Appendix 1

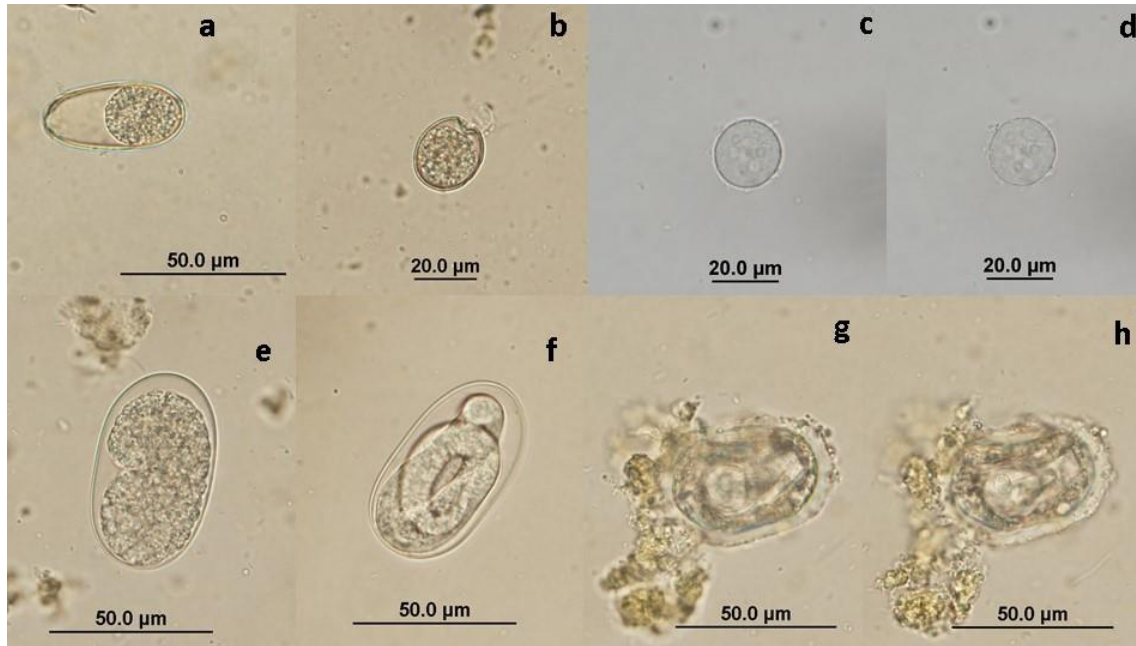


Figure A1. Gastrointestinal parasites identified in Perth brushtail possums: a) unsporulated coccidian oocyst (morphologically consistent with *Eimeria trichosuri*); b) unsporulated coccidian oocyst; c and d) *Entamoeba* sp. oocyst; e) unembryonated strongyle (Suborder Rhabditina) egg; f) embryonated strongyle egg; g and h) unidentified acanthocephalan (Phylum Acanthocephala) egg.

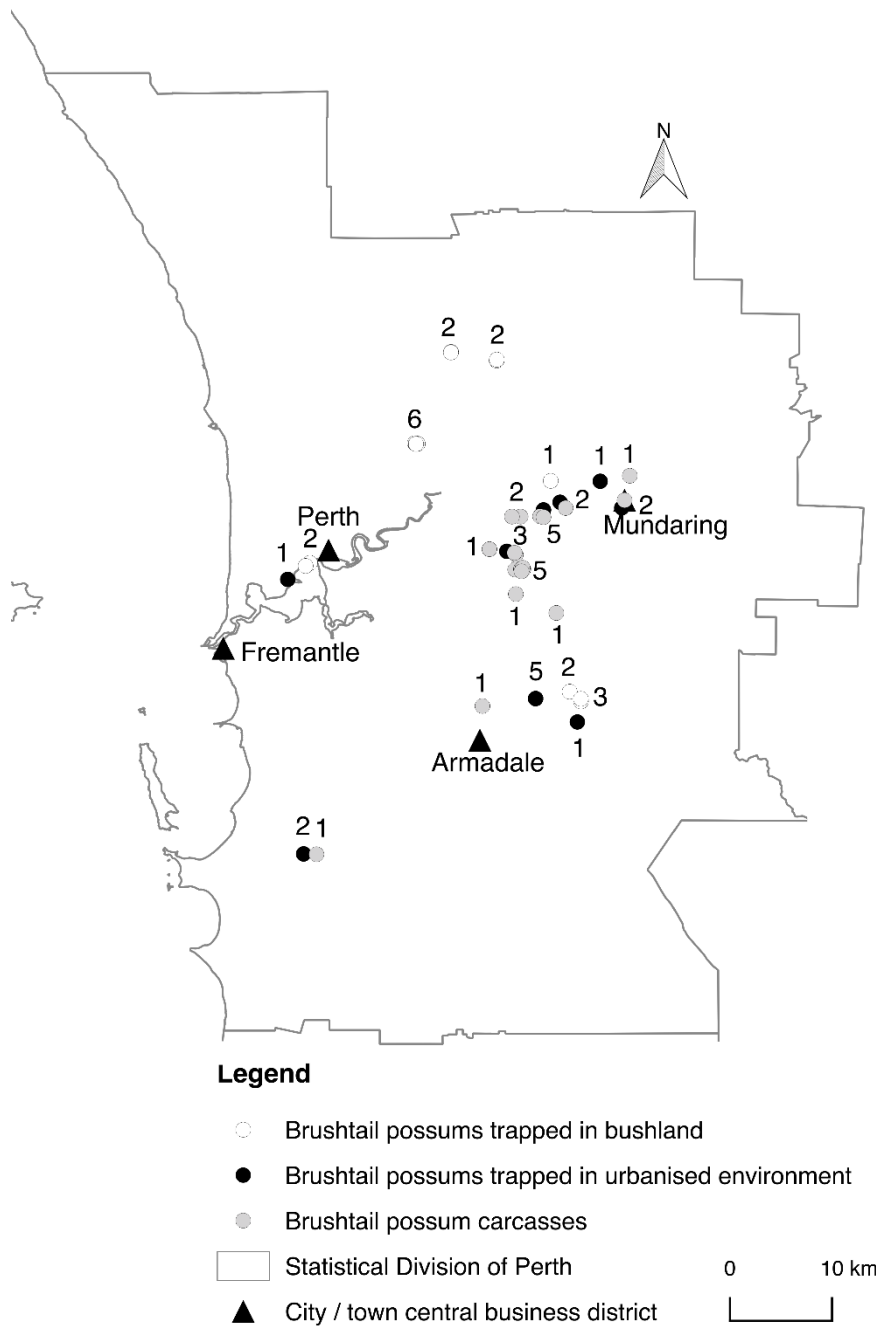


Figure A2. Locations of sampled brushtail possums (*Trichosurus vulpecula*) in the greater Perth region, Western Australia. Numbers next to symbols indicate the number of possums, for clarity where symbols overlap. Locations were not available for three possum carcasses. Note: trapping was undertaken at an additional 26 urbanised sites and 22 bushland sites, not represented on this map – no brushtail possums were trapped at these locations.

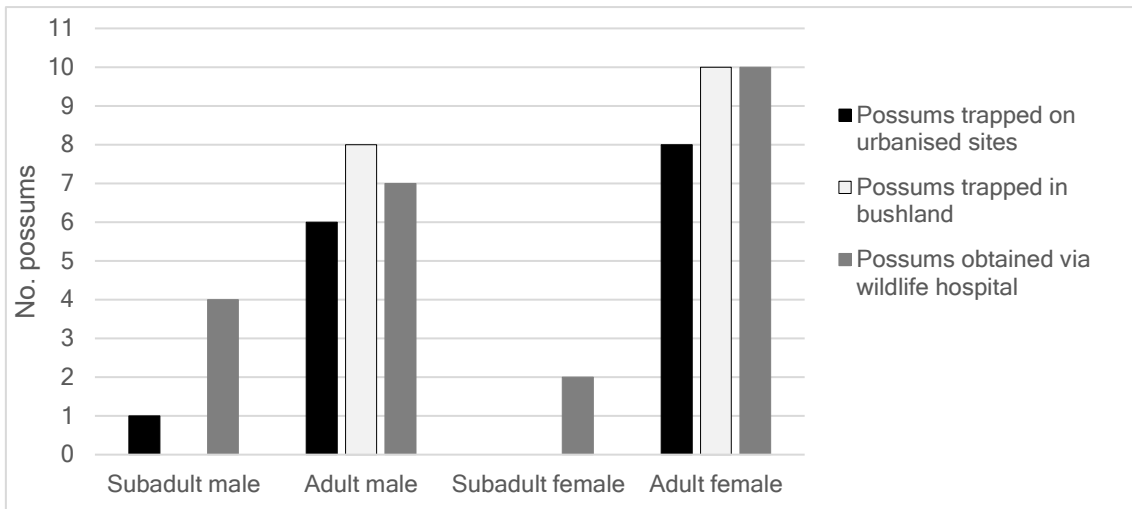


Figure A3. Brushtail possums (*Trichosurus vulpecula*) sampled for parasites: sex and maturity, by source population.

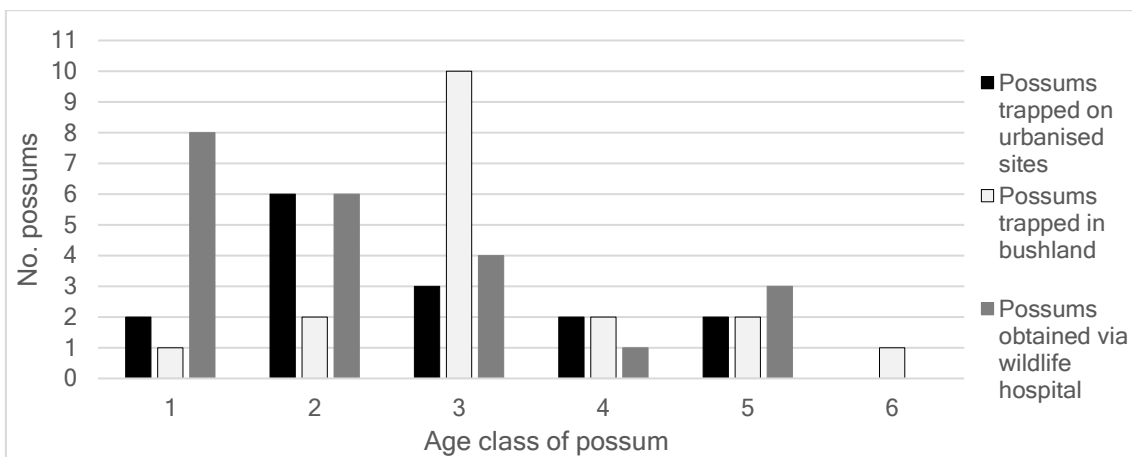


Figure A4. Brushtail possums (*Trichosurus vulpecula*) sampled for parasites: age class, by source population (age class was not able to be assessed in one possum sampled from a wildlife hospital, due to traumatic injuries).

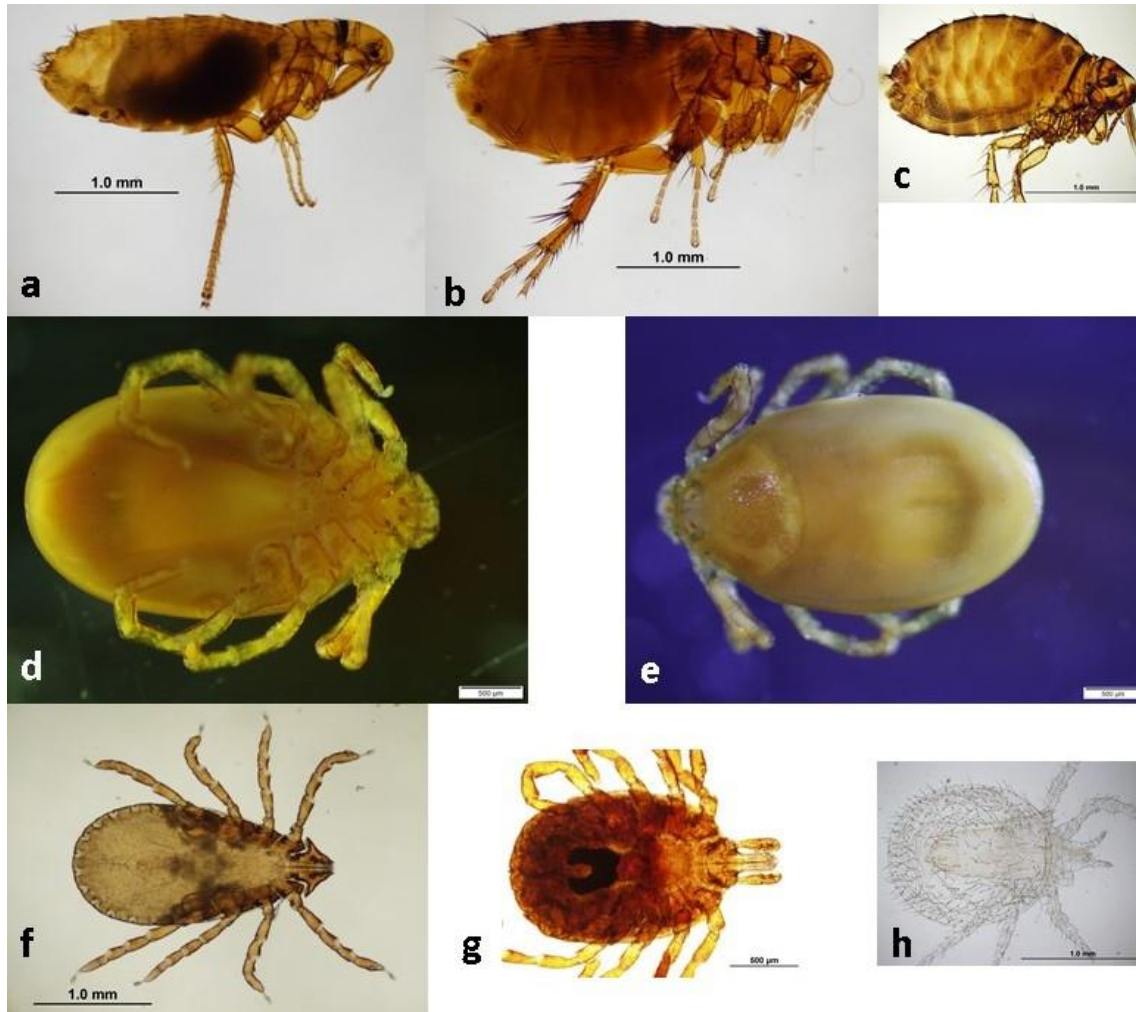


Figure A5. Ectoparasites identified in Perth brushtail possums: a) *Chorisopsylla ochi*; b) *Pygiopsylla tunneyi*; c) *Echidnophaga myrmecobii*; d) *Ixodes tasmani* - ventral view; e) *Ixodes tasmani* – dorsal view; f) *Haemaphysalis bremneri*; g) *Amblyomma* sp. nymph; h) *Liponyssoides* sp.