

## Appendix 1

Figure A1. The geographic locations of the wood chip samples (n = 258) collected by volunteers. Wood chip samples were used to extract DNA to identify beaver species.

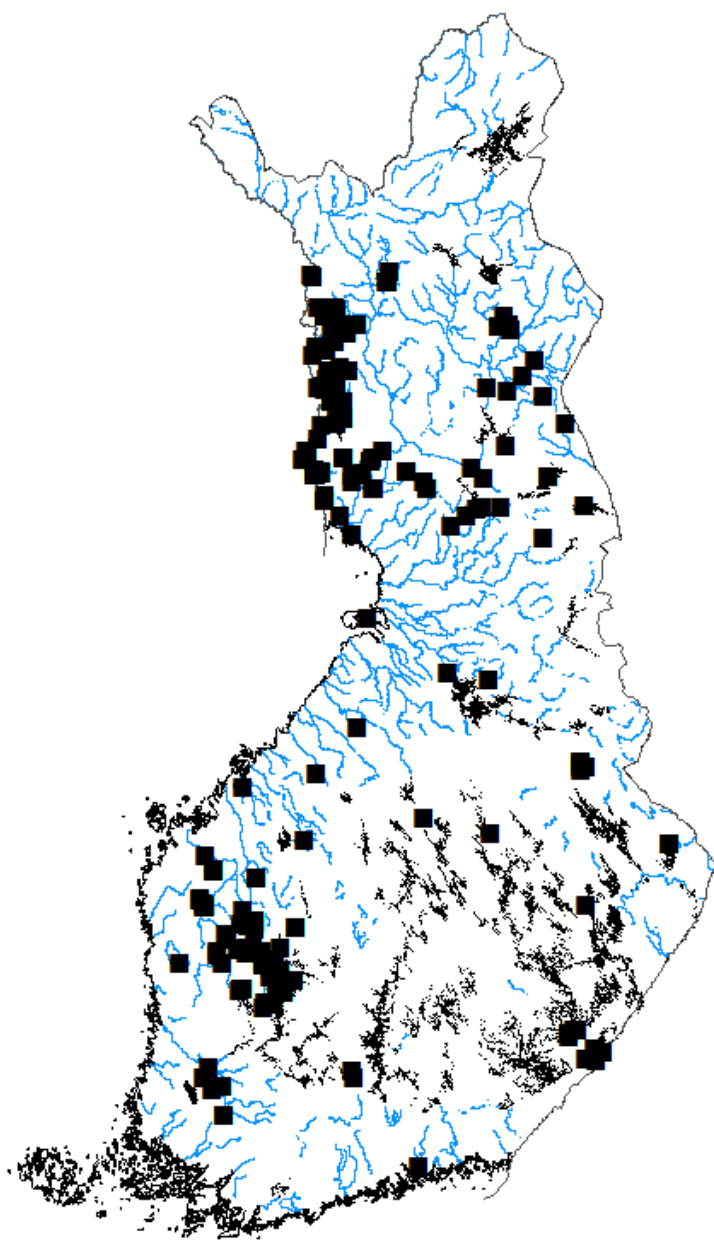


Figure A2. PCR products on an agarose gel. Lane 1: the negative control, lane 2: the PCR product amplified from the tissue of *C. fiber*, lane 3: PCR product from the tissue of *C. canadensis*, lane 4: the PCR product from the reference wood chip sample of *C. canadensis* from Ähtäri zoo, lane 5: the PCR product from the wood chip sample of *C. fiber*, lane 6: the PCR product from the wood chip sample of *C. Canadensis*. We used a GeneRuler 100 bp DNA ladder (Fermentas) as a size marker (std).

