

Focardi, S., Franzetti, B., La Morgia, V., Montanaro, P., Riga, F., Calabrese, A., Ronchi, F., Aragno, P., Scacco, M. and Calmanti, R. 2020. Reliable estimates of wild boar populations by nocturnal distance sampling. – Wildlife Biology 2020: wlb.00694

Appendix 1

We report the habitat distribution and the location of transects in the four study areas.

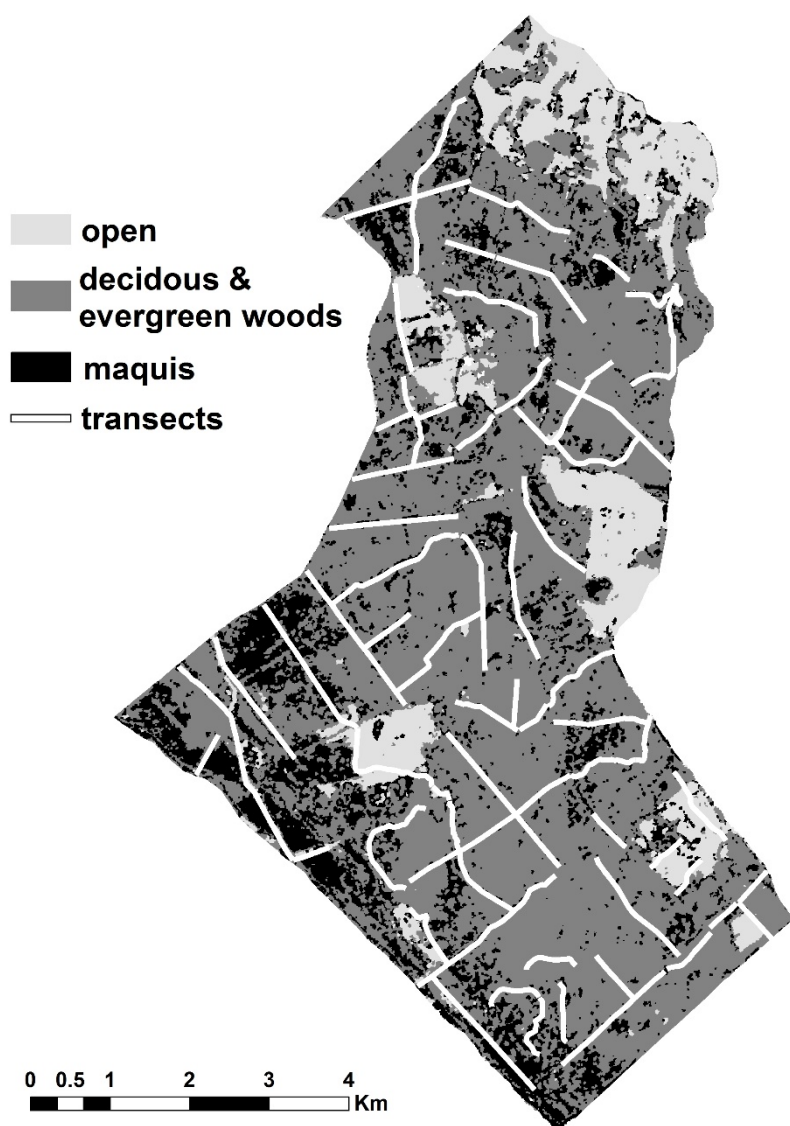


Figure A1. Castelporziano

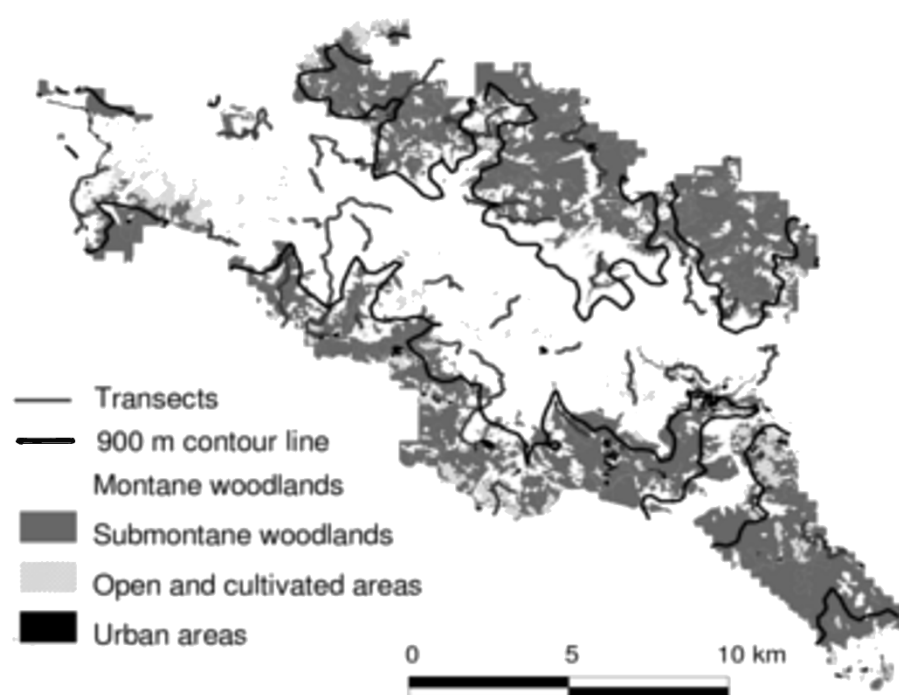


Figure A2. Casentino

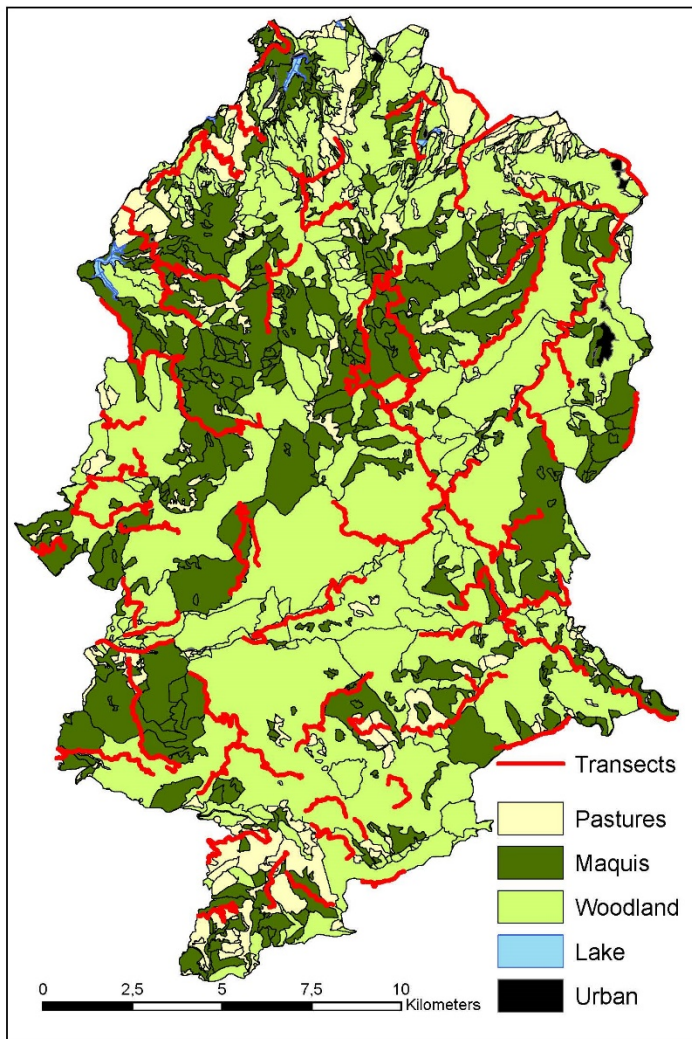


Figure A3. Monte Arcosu.

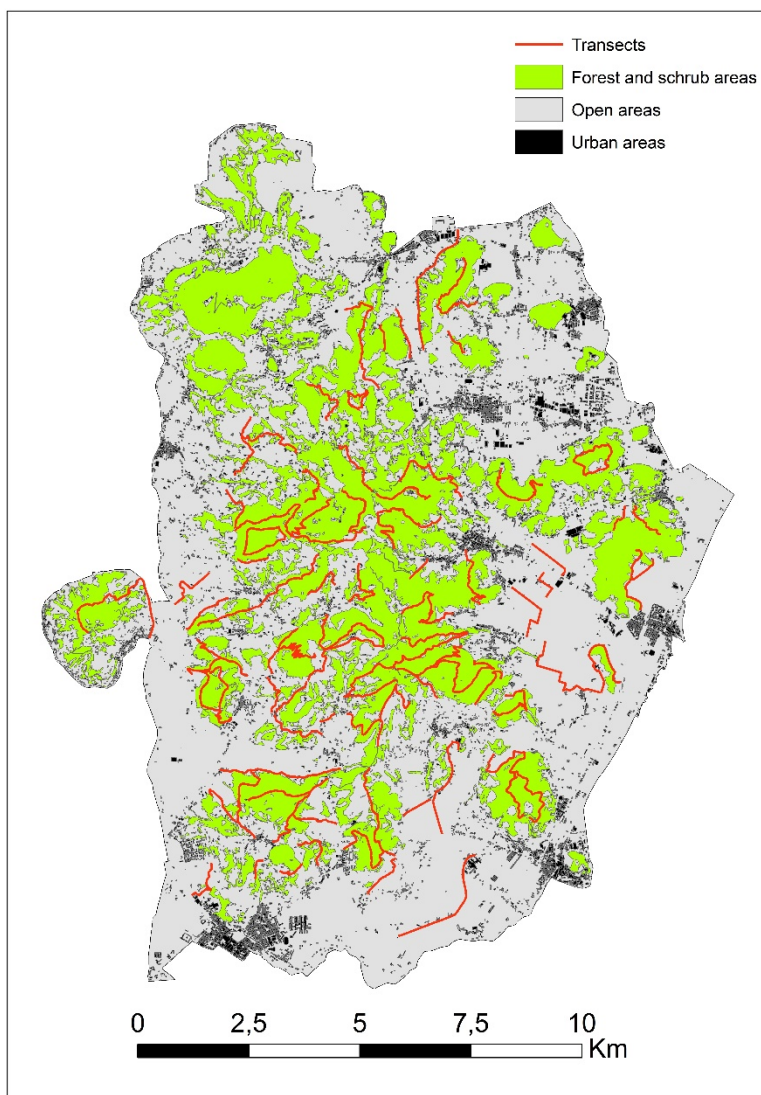


Figure A4. Colli Euganei.

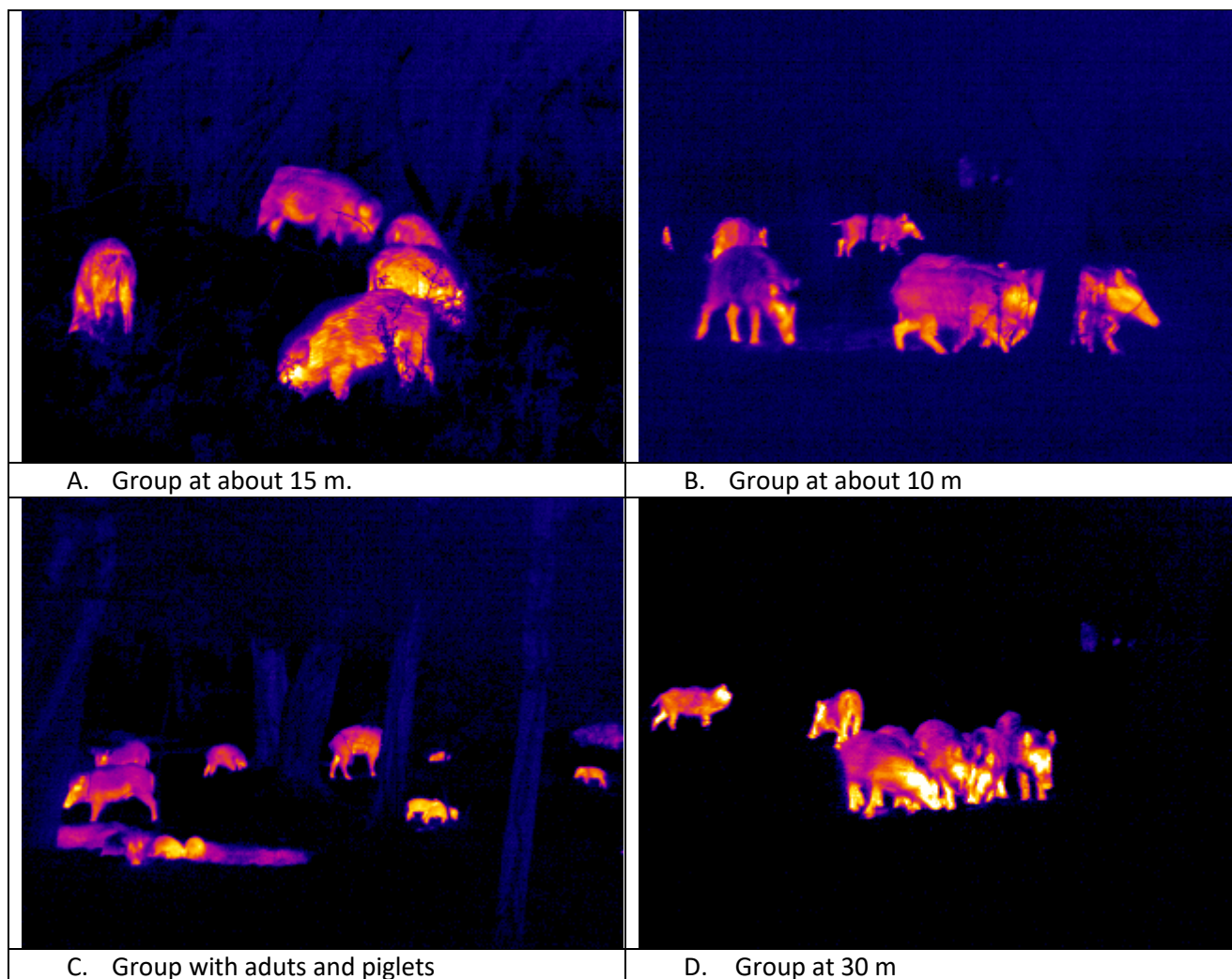


Figure A5. Group of wild boar recorded by a thermocam at different distances and with different composition.

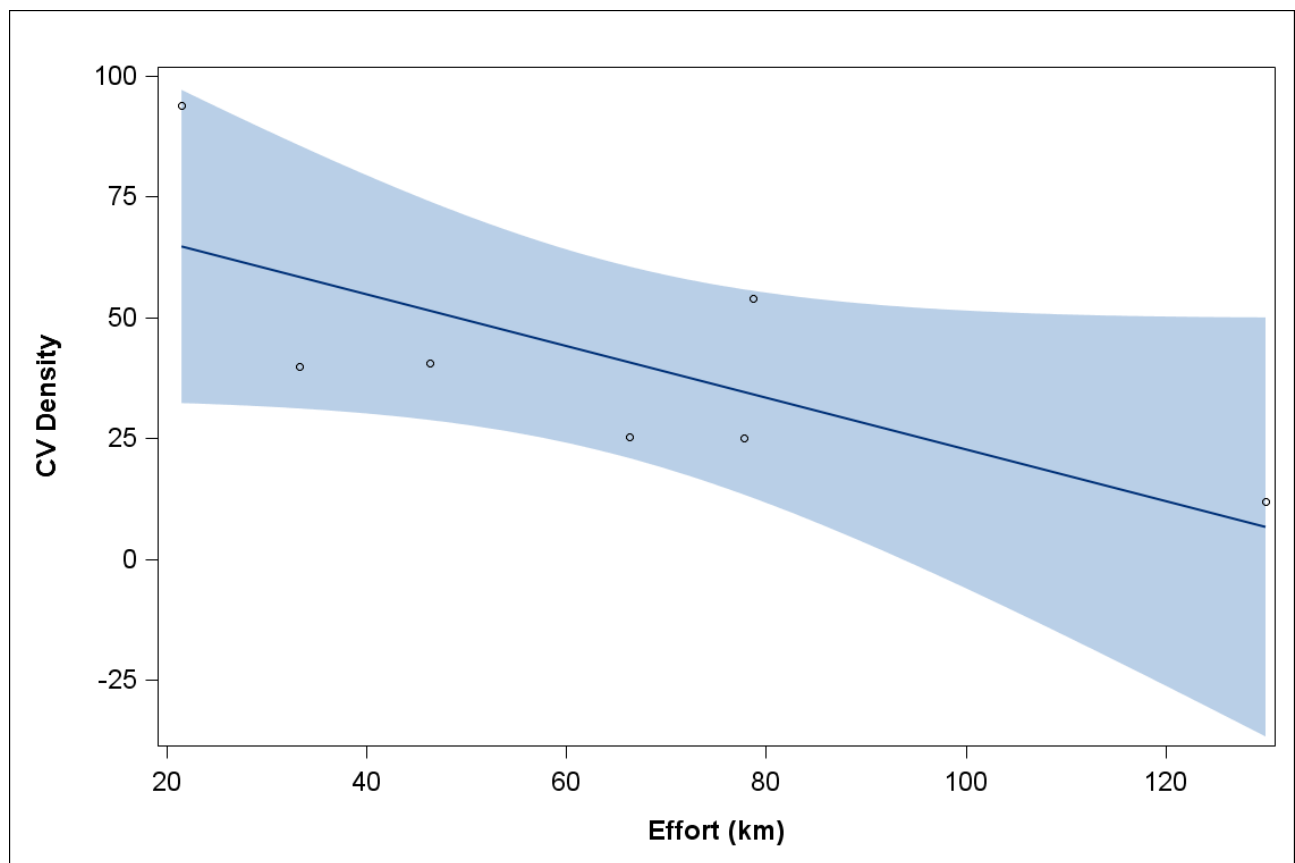


Figure A6. The %CV of density estimated per study area and habitat as a function of effort (total number of km walked, cf. Table 1).