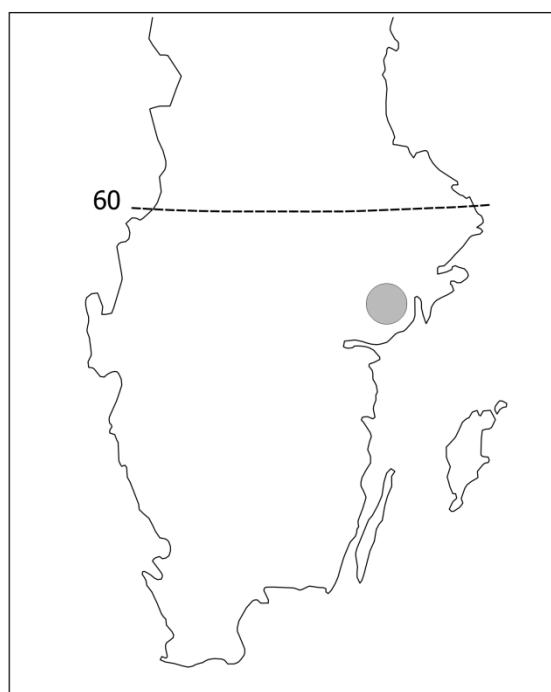


Bergqvist, G., Paulson, S. and Elmhagen, B. 2018. Effects of female body mass and climate on reproduction in northern wild boar. – Wildlife Biology 2018: wlb.00421

Appendix 1

Map of southern Sweden showing the approximate location of the study area (grey circle). Latitude 60°N indicated by dashed line.



Appendix 2

Average summer (June, July, August) temperature (°C), total summer precipitation (mm) and average January temperature (°C) in the study area. For summer temperature and January temperature, one SD of the mean is given within brackets.

| Year | Summer | | January |
|------|-------------|---------------|-------------|
| | Temperature | Precipitation | Temperature |
| 2003 | 17.2 (2.90) | 228.2 | -3.7 (7.35) |
| 2004 | 15.9 (2.69) | 260.5 | -5.1 (4.63) |
| 2005 | 16.2 (2.79) | 257.3 | 0.8 (3.81) |
| 2006 | 18.2 (2.78) | 257.8 | -3.8 (3.96) |
| 2007 | 16.5 (2.85) | 179.8 | -0.3 (5.02) |
| 2008 | 16.2 (2.79) | 280.2 | 1.7 (2.43) |
| 2009 | 16.0 (3.42) | 248.0 | -2.3 (4.76) |

Data from climate station 96000 Valla (lat. 59.0°N, long. 16.4°E, alt. 50 m a.s.l.). Retrieved 12 July 2013. SD for average temperature is based on daily mean values.

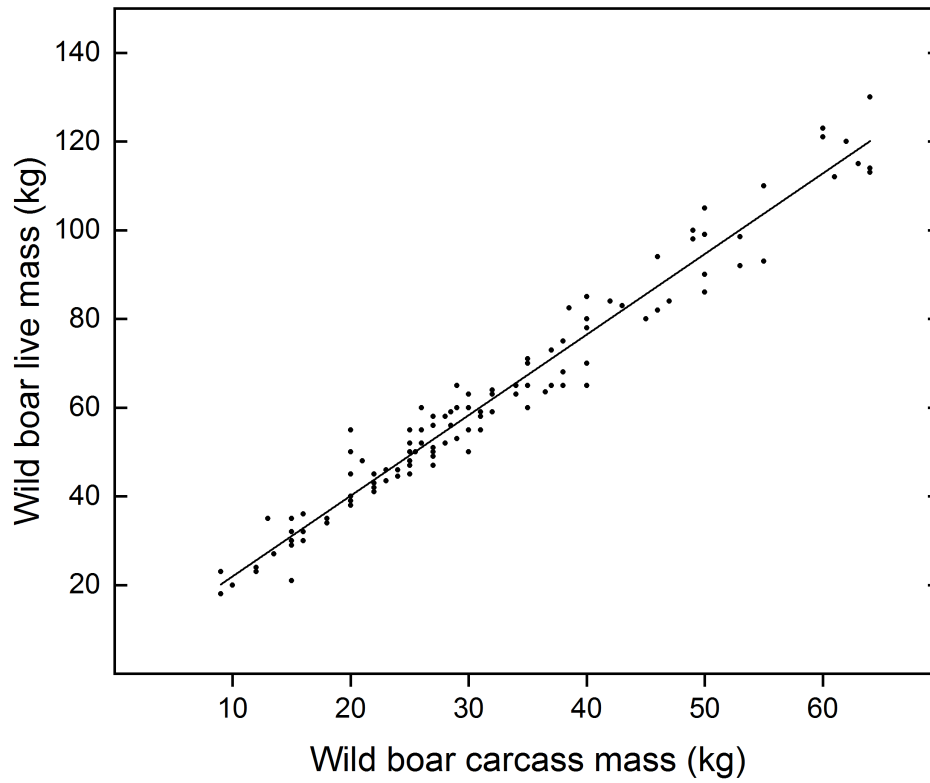
Appendix 3

Number of females sampled in different months and years.

| Month | Year | | | | | | | Total |
|-----------|------|------|------|------|------|------|------|-------|
| | 2003 | 2004 | 2005 | 2006 | 2007 | 2008 | 2009 | |
| January | | 20 | 14 | 21 | 19 | 14 | 23 | 111 |
| February | 9 | 18 | 6 | 17 | 17 | 7 | 10 | 84 |
| March | 5 | 7 | 3 | 12 | 3 | 11 | 14 | 55 |
| April | 4 | 6 | 4 | 2 | 13 | 13 | 10 | 52 |
| May | 4 | 8 | 8 | 9 | 4 | 6 | 11 | 50 |
| June | 5 | 7 | 6 | 8 | 11 | 7 | 4 | 48 |
| July | 3 | 6 | 7 | 4 | 7 | 3 | | 30 |
| August | 1 | 3 | 2 | 3 | 1 | 2 | | 12 |
| September | 4 | 1 | 1 | 5 | 2 | 3 | | 16 |
| October | 0 | 7 | 2 | 4 | 4 | 12 | | 29 |
| November | 4 | 2 | 12 | 10 | 12 | 12 | | 52 |
| December | 10 | 11 | 10 | 12 | 4 | 15 | | 62 |
| Total | 49 | 96 | 75 | 107 | 97 | 105 | 72 | 601 |

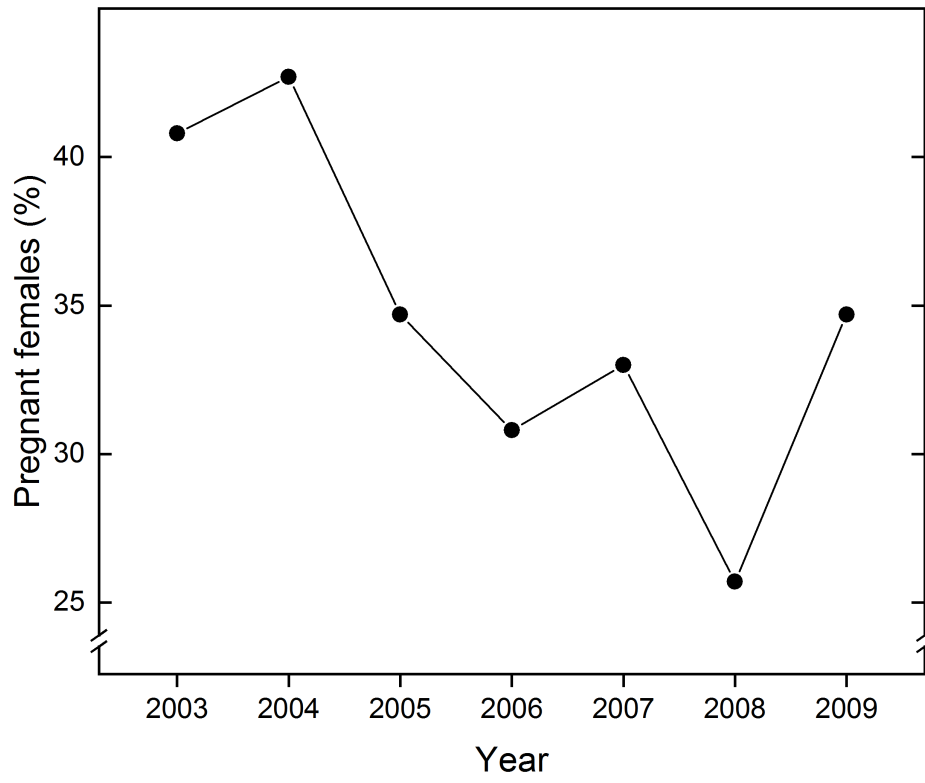
Appendix 4

Carcass mass and live mass for 117 wild boar. Solid line shows the regression $y = -0.746 + 0.528x$,
Adj. $R^2 = 0.960$.



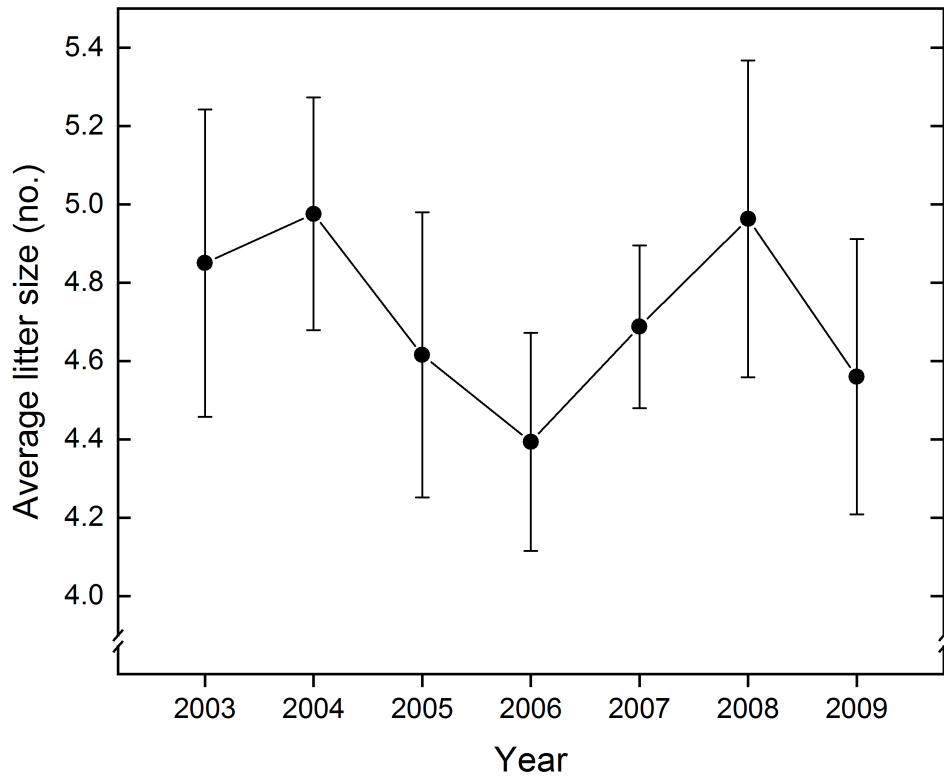
Appendix 5

Annual mean values of pregnancy rate, based on 601 females.



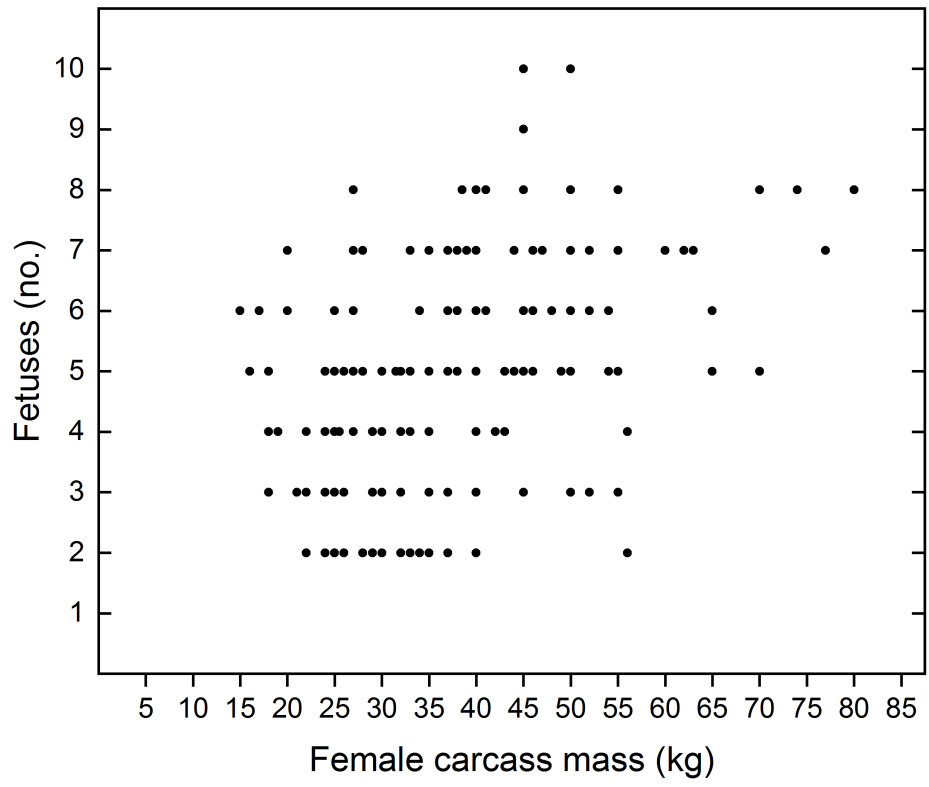
Appendix 6

Annual mean litter size, based on 204 females with visible fetuses. Vertical bars show \pm one SE of the mean.



Appendix 7

Carcass mass and number of fetuses for 204 females.



Appendix 8

Number of females in each mass class, sampled in each year.

| Year | Carcass mass (kg) | | | | | | |
|-------|-------------------|-------|-------|-------|-------|-------|-------|
| | 15–25 | 26–35 | 36–45 | 46–55 | 56–65 | 66–75 | 76–85 |
| 2003 | 13 | 18 | 10 | 6 | 1 | 1 | 0 |
| 2004 | 30 | 27 | 20 | 11 | 6 | 2 | 0 |
| 2005 | 21 | 30 | 13 | 8 | 2 | 0 | 1 |
| 2006 | 27 | 32 | 32 | 12 | 3 | 1 | 0 |
| 2007 | 34 | 32 | 21 | 7 | 3 | 0 | 0 |
| 2008 | 41 | 30 | 20 | 8 | 3 | 2 | 1 |
| 2009 | 32 | 22 | 11 | 4 | 2 | 1 | 0 |
| Total | 198 | 191 | 127 | 56 | 20 | 7 | 2 |